



HERTFORDSHIRE

CONSTABULARY

***Royston Rural  
Watch, January  
2024***

PC 396 Tom Woollard & PCSO 6048 Hannah Moss PCSO  
6522 Chris Brabrook

Sgt Ryan Champion 1304



***Our Non -  
Emergency  
Number 101***

## **Freeze out burglars this winter**

Keep burglars out in the cold this winter, by making sure your home, garden and outbuildings are secure.

December was a busy time for criminals with burglaries increasing by more than 23 per cent overall. Garages and outbuildings were most often targeted with offences increasing 75 per cent\* on last December, whilst home break ins were up by more than 20 per cent.

More than 80 shed and outbuilding burglaries occurred around the county during the month, with Dacorum (11), St Albans (eight) and Watford (seven) having the highest number of offences.

Nicola Chamberlain, Hertfordshire Constabulary's Crime Prevention lead said: "This time of year burglars are out and about looking out for valuable things to steal, like new tools, bicycles and other expensive items left in sheds and garages that have little or no security. We are recommending that everyone takes some basic security measures to make sure their outbuildings are secure.

Don't leave anything valuable in them unless they are well secured with good quality locks or even an alarmed padlock. Dusk till dawn security lights will make your home even safer."

These tips will help to make your garden and outbuildings more secure:

Always lock your shed, preferably with two 'hasp and staple' locks (one near the top and one near the bottom of the door) or use or an alarmed padlock.

Secure your rear garden by locking entry gates with a padlock.

Burglars can use garden tools to break in, so make sure you securely lock away any tools after use.

Make access to the rear of your property difficult, keep rear/side gates closed and locked and ensure boundary walls/fences are in good repair.

Tools and gardening equipment should be visibly marked with your postcode and house number - this can deter thieves and help police identify the rightful owner.

Remember to lock your garage door securely. Metal 'up and over' doors can be secured with extra locks fitted either side and/or a floor-mounted locking 'T' bar with a closed shackle padlock.

Wooden garage doors can be secured with two substantial 'hasps and staple' locks and closed shackle padlocks (your local DIY store can advise on the most secure options).

Join Neighbourhood Watch or Allotment Watch to help reduce crime in your local area.

Keep wheelie bins secured so they cannot be moved or used as climbing aids.

Plant defensive spiky plants under windows such as berberis, roses and pyracantha. Watch our video on defensive plants

Most bicycles are stolen from home so ensure they are kept in secure sheds, outbuildings and garages.

Consider installing ground anchors if you have a concrete floor. If not, look for security rated products specifically for wooden and metal sheds.

## Have you seen these items stolen from Royston?

Detectives investigating a burglary in Royston are releasing images of some of the stolen items in the hopes of tracking them down.

The items were stolen from a property in Mallow Walk, sometime between 4.55pm and 5.05pm on Wednesday 13 December.

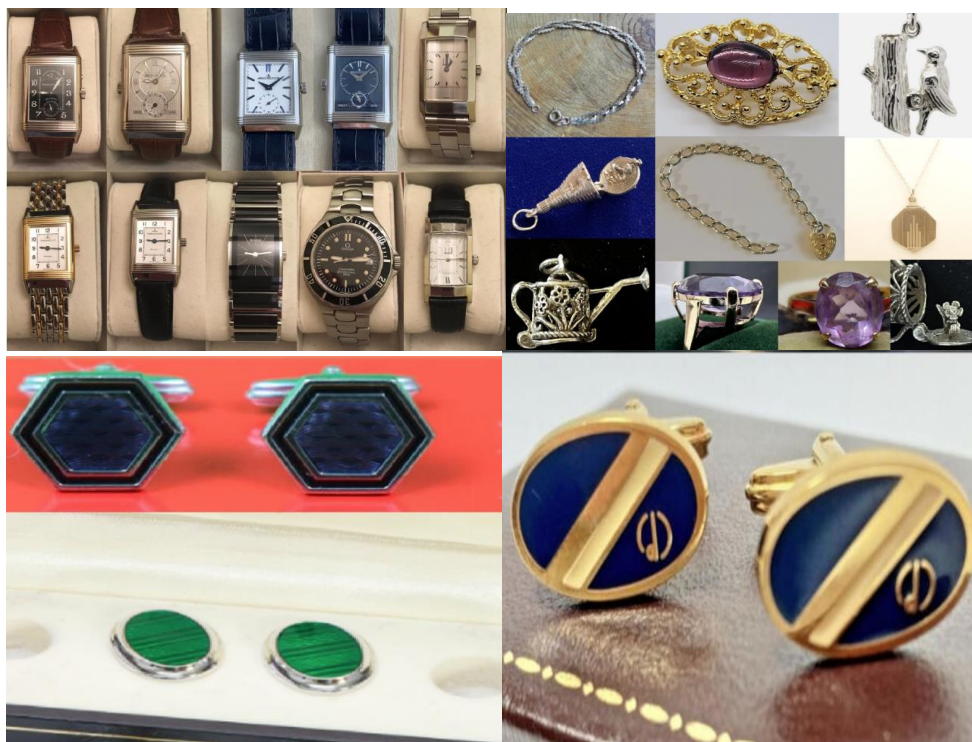
Detective Sergeant Ian Smith, from the North Herts Local Crime Unit, said: "Our enquiries are continuing at this time to trace those responsible for the burglary. As part of this, we are releasing images of some of the items stolen in a bid to trace them. We'd love to be able to return them to their rightful home.

"Have you come across them or seen them advertised for sale anywhere? If you have any information at all which may assist us, please get in touch."

Anyone with information is asked to please contact DS Smith by email.

You can also report information online, speak to an operator in our Force Communications Room via our online web chat or call the non-emergency number 101, quoting crime reference 41/99445/23.

Alternatively, you can stay 100% anonymous by contacting the independent charity Crimestoppers on 0800 555 111 or via their untraceable online form.



## **G4E - Ashwell, Hinxworth, Bygrave, Newnham and Caldecote**

**Theft of Motor Vehicle, Ashwell – Between 12:30 to 13:45 on 11<sup>th</sup> December. A vehicle was stolen from a farm in Ashwell. The vehicle taken was a Isuzu D-Max Yukon and was later recovered in Haynes, Bedfordshire and returned to its owner – 41/98852/23 Refers**

## **G4D – Barley, Barkway, Reed, Therfield, Kelshall and Nuthampstead**

**Interference with a Motor Vehicle, Nuthampstead – Between 16<sup>th</sup> to 19<sup>th</sup> December a flat bed truck was parked at the side of the road in the village. The offender has approached the vehicle and has attempted to force the horizontal shutter that protects the contents of the truck causing damage. The offender fled the area before gaining entry to the vehicle. 41/101222/23**

**Burglary, Business + Community, Therfield - Between 1am to 6am overnight on 9<sup>th</sup> December a farm workshop was targeted in Therfield. The offender has broken the lock and damaged a door to the farm work shop. Nothing was removed from inside the property. 41/98467/23**

## **G3C - Sandon, Wallington, Rushden, Clothall and Weston**

**Attempted Burglary, Outbuilding, Rushden – Overnight on 8<sup>th</sup> December an outbuilding situated on the ground of a manor house was targeted by offenders. The offender approached the door to the outbuilding and has forced the door revealing a wooden panel fitted for extra security by the owner. The Offender at this point has given up and made off. 41/98228/23 Refers**

**Theft from Motor Vehicles, Clothall – Overnight on 9<sup>th</sup> December a number of vehicles were targeted in Clothall. The offender has walked house to house checking door handles of vehicles, any unlocked cars were entered and searched. Property taken included cash, electronic items and sunglasses. 41/98613/23, 41/98492/23 and 41/98424/23 Refers**

## **Your local Neighbourhood Police Teams website**

<http://snt.herts.police.uk/Teams.aspx?TeamID=G01>

### Useful Links

<http://www.herts.police.uk/>

<http://www.doglost.co.uk/>

<http://www.stolenhorseregister.com/>

**Royston Rural Neighbourhood Team Tel – 01438 757935**