

# Ashwell Pavilion Newbuild Project-

existing floor plan with 'thoughts' from meetings with users (13/11/2019 and updated 07/01/2020)

**Veranda/patio area.** Opening doors onto patio and covered area good for sports and event use.

**Lobby area.** Needs to seat at least x30 people at small tables (cricket and event use).

## General items.

**Additional space.** (i) a room(s) for club use. (ii) a room for the parish council office.

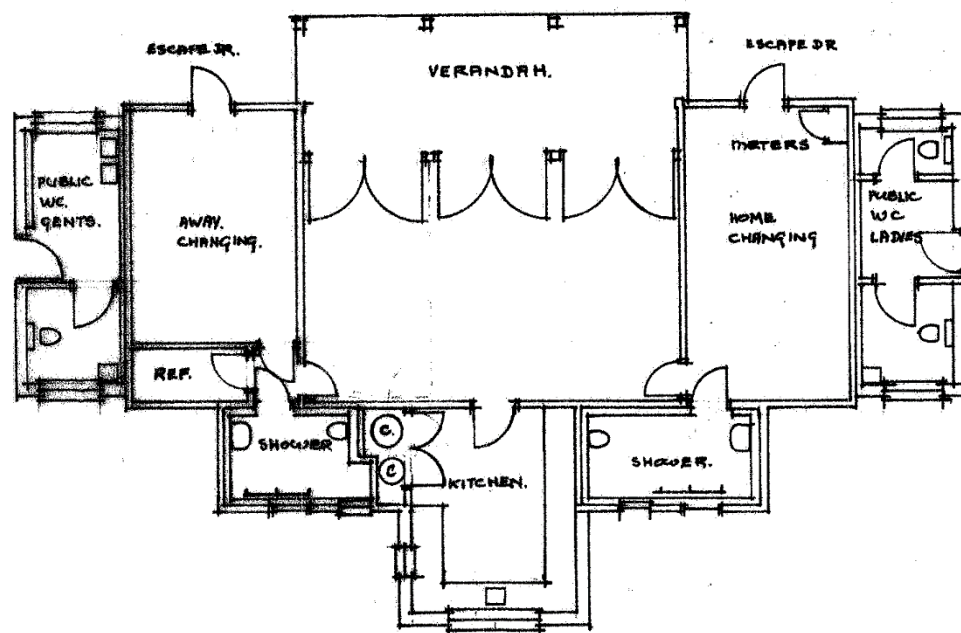
**Storage.** Keep the existing shipping containers (much cheaper than including in footprint). More internal storage for smaller items of club equipment?

**Layout.** Preference for changing rooms separated, ie as existing, not side-by-side.

**Energy.** Include solar panels? Heat source supply?

**Design.** Incorporate space on frontage for CC's electronic scoreboard.

**Floodlighting.** To light area for training.



**Refs Room.** Football league probably requires this. Need to include a shower unit?

**Kitchen.** Size and units provided generally good. Needs a serving hatch. Lockable, dedicated storage space for clubs' property to be included.

**Changing rooms x2.** Size of Home is OK but Away is too small. Would be better if wider to accommodate large kit bags when in use. For players, bench seating and hooks are essential; individual lockers not needed. Current storage space under benches for club equipment works well. Doors should NOT lead directly out onto pitch.

**Toilets.** Need (i) suitable number for when the pavilion is in use accessed from the inside; should include urinals, (ii) x2 units for general public use accessed from outside (including x1 disabled/nappy changing).

**Showers.** x2 rooms. Size, ie x4 shower heads thought adequate. Should have lockable cubicles.