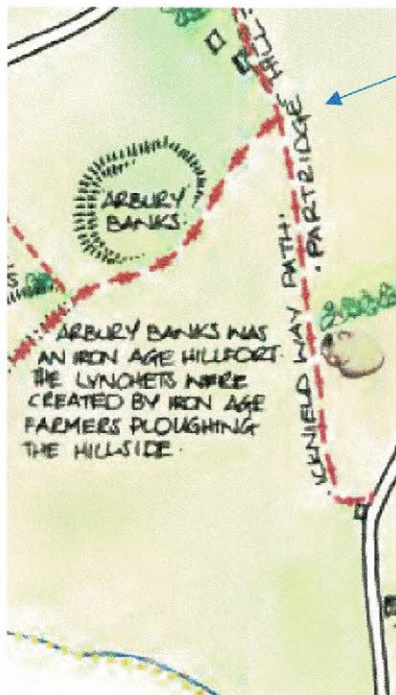
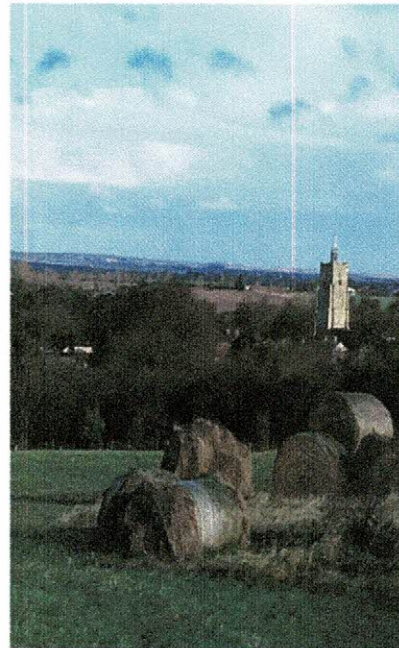


Now at
10am

Walk & Discover – Ashwell farmer guided talk 3pm on 17th July

Land at Whitby Farm (adjacent Partridge Hill) is managed by Tim & Sandra Gawthrop who live in the heart of Ashwell. On this 3km farm walk Tim will talk about the unusual crops he grows and why and the wholefood brand (www.hodmedods.co.uk) which takes & sells their produce. You'll discover the other issues faced by farmers and the choices they have to make. As a local farmer their actions have a major impact on our local environment and Tim will be happy to answer any questions you may have. The walk will be of interest to all ages and will take approximately 1 ½ hours.



The walk will start from the junction of Partridge Hill BOAT and the Public Footpath leading to Arbury Banks.

Please come suitably prepared for the weather on the day and the footpaths.

If you are a dog owner please do not bring dogs on the walk as it will involve livestock.

Please contact the Parish Office if you have any questions.